

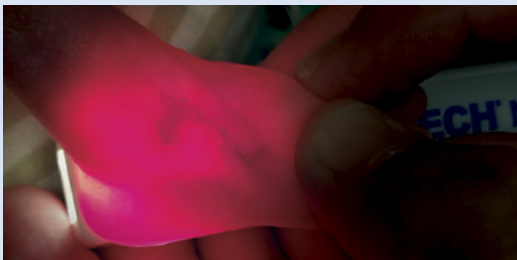
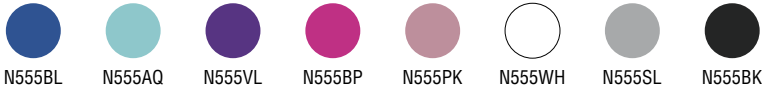
## NeoGlo<sup>®</sup>

### TRANSILLUMINATOR



N555BP

Available Colors



#### FEATURES & BENEFITS

- LED lights cool to the touch for patient safety
- Multiple light settings for user preference
- Ergonomic design for clinician comfort
- Compact size for use in incubator
- Illuminates veins, arteries and other internal structures
- Engineered to shut off before lights become ineffective
- Requires single AA alkaline battery (included)
- Eight colors to choose from
- Lanyard hoop
- Affordably priced
- Not made with natural rubber latex or plasticizer DEHP

#### NeoGlo Sleeve

- Protective cover helps to keep NeoGlo clean and protect against bodily fluids
- Durable and disposable
- Self-sealing flap
- Not made with natural rubber latex or plasticizer DEHP

CAT. #	ITEM	QTY/UNIT
N555BL	Blue	1/box
N555AQ	Aqua	1/box
N555VL	Violet	1/box
N555BP	Bright Pink	1/box
N555PK	Rose	1/box
N555WH	White	1/box
N555SL	Silver	1/box
N555BK	Black	1/box
N55100	Sleeve 100 Pack	100/box*

\*NeoGlo Sleeve: minimum purchase of 10 boxes

U.S. Patent Pending



Made in USA

# NeoGlo<sup>®</sup>

## TRANSILLUMINATOR

### INDICATIONS FOR USE

The NeoGlo Transilluminator is a hand-held, battery-powered device that is a light source intended to transmit light through tissues to aid examination of patients.

The NeoGlo Sleeve is intended for use as a temporary protective cover to help keep the NeoGlo Transilluminator clean.


### DIRECTIONS FOR USE

- 1 Remove battery cover, insert AA alkaline battery (included) and replace cover.

*Note: Light settings will cycle through once and return to off setting.*

*Caution: Do not stare directly into lights. Do not stare directly into lights. Inserting battery in the wrong direction may produce heat and damage the unit.*

- 2 Select desired light setting:

- Press power button  once for forward facing white lights.
- Press again for upward facing white lights.
- Press again for upward facing red lights.
- Press again for upward facing white and red lights.
- Press again to turn off.
- Repeat cycle as needed.

- 3 With preferred light setting on, hold NeoGlo to patient's skin for illumination.

*Note: Dim room lights for most effective illumination*

- 4 Clean NeoGlo with alcohol wipe or CaviWipe™ after each use. For NeoGlo Sleeve directions, refer to website or packaging.

### GENERAL INFORMATION

Up to 4 hours of continuous use with a new industrial strength AA alkaline battery, depending on light setting.

#### Product Materials

Outer casing: ABS plastic

Lenses: Polycarbonate

This product is not made with natural rubber latex or plasticizer DEHP.

#### Size

.875 in. x .875 in. x 5 in.

#### 30 Day Satisfaction Guarantee

If you are not satisfied with the performance of your NeoGlo for any reason, simply return within 30 days of purchase.

Send back your NeoGlo in its original packaging along with proof of purchase and Neotech will refund the full purchase price, less shipping.

Customer is responsible for return shipping. We do not accept returns for any reason after 30 days. If your unit is not working properly after 30 days, please refer to WARRANTY.

NeoGlo Transilluminators purchased through a third party seller are subject to their return policy.

#### Warranty

One year warranty on electronic performance based on normal intended use and storage (-40°C/-40°F to +85°C/+185°F; relative humidity between 5% and 95%, non-condensing).

Exclusions; warranty does not cover:

- a) Battery replacement
- b) Damage or failure caused by leaking batteries, rust, corrosion, water and other liquid damage, infestation, negligence, abuse, or misuse
- c) Failure to follow manufacturers recommended operating and maintenance procedures

NeoGlo must be returned in its **original packaging** along with proof of purchase. Failure to return without the original packaging may void the warranty.

#### RoHS compliant

#### Packaging

Individually packaged: Yes

Package type: Box

Visit [neotechproducts.com](http://neotechproducts.com) for the most up-to-date information.

### CAUTIONS & WARNINGS

Do not shine light directly into eyes.

Do not submerge NeoGlo in liquid.

Do not autoclave NeoGlo. Exposure to steam or excessive humidity may cause electrical failure.

Use AA alkaline batteries only. Do not insert rechargeable batteries. Inserting battery incorrectly may damage the unit and void the warranty.

Dispose of NeoGlo in accordance with local electronic regulations.

NeoGlo Sleeve not intended to protect NeoGlo from water or other damage.

NeoGlo Sleeve single use only.



For more information or to order your **FREE** sample call  
**1-800-966-0500** or visit **neotechproducts.com**

Neotech Products LLC • 28430 Witherspoon Pkwy, Valencia, CA 91355

©2021 Neotech Products LLC. Product configuration is a trademark owned by and exclusively associated with Neotech.



M631 Rev E